



## 5 Grove Road

Harpenden, AL5 1QG

A stunning two Bedroom, end terrace period cottage in the heart of Southdown, close to excellent schooling and a short distance from the station and Harpenden town centre. Lovely, low-maintenance garden with westerly aspect. Finished to an exacting standard by our clients, internal viewing is imperative to truly appreciate this wonderful home.

**Guide price £550,000**

# 5 Grove Road

Harpenden, AL5 1QG



- End terrace period cottage
- Short distance to town centre and station
- Stunning internal finish
- Low maintenance westerly aspect garden
- In the heart of Southdown
- Council Tax band D

## Living Room

15'6" x 11'8" (4.73 x 3.56)

## Kitchen/Dining Room

18'2" x 11'1" (5.55 x 3.40)

## Utility Cupboard

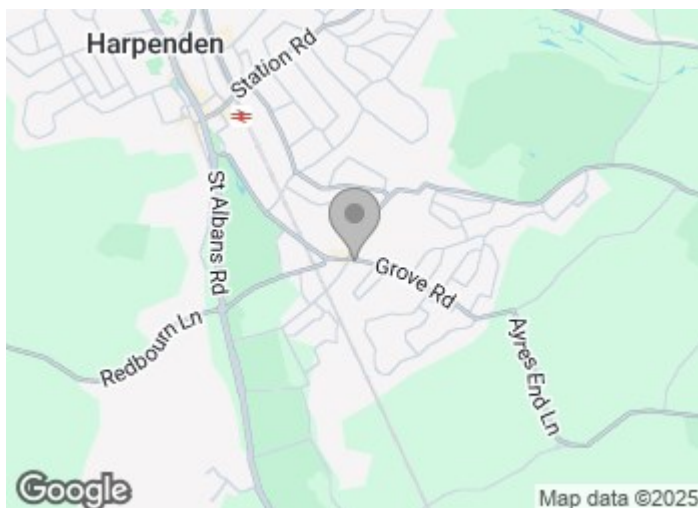
## Bedroom One

12'3" x 10'10" (3.75 x 3.31)

## Bedroom Two/Study Area

11'8" x 8'7" (3.57 x 2.62)

## Bathroom

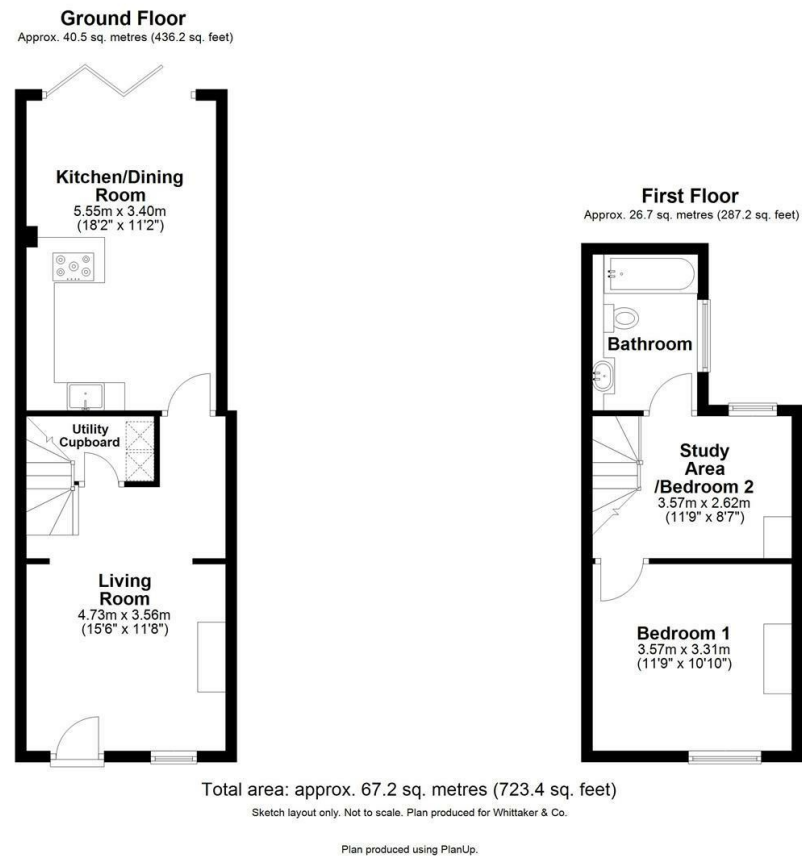


[Directions](#)





Floor Plan



These particulars, whilst believed to be accurate are set out as a general outline only for guidance and do not constitute any part of an offer or contract. Intending purchasers should not rely on them as statements of representation of fact, but must satisfy themselves by inspection or otherwise as to their accuracy. No person in this firms employment has the authority to make or give any representation or warranty in respect of the property.

